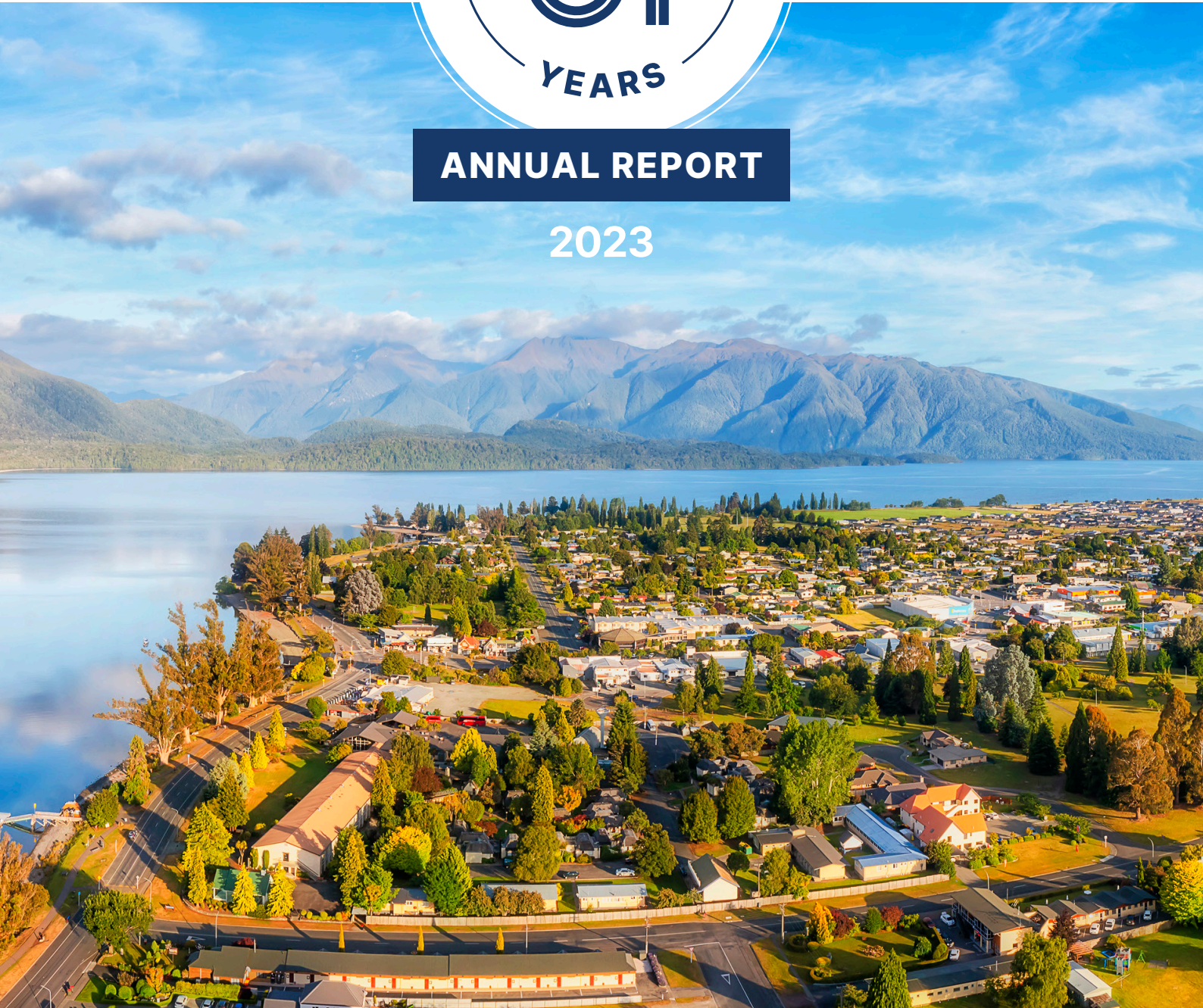
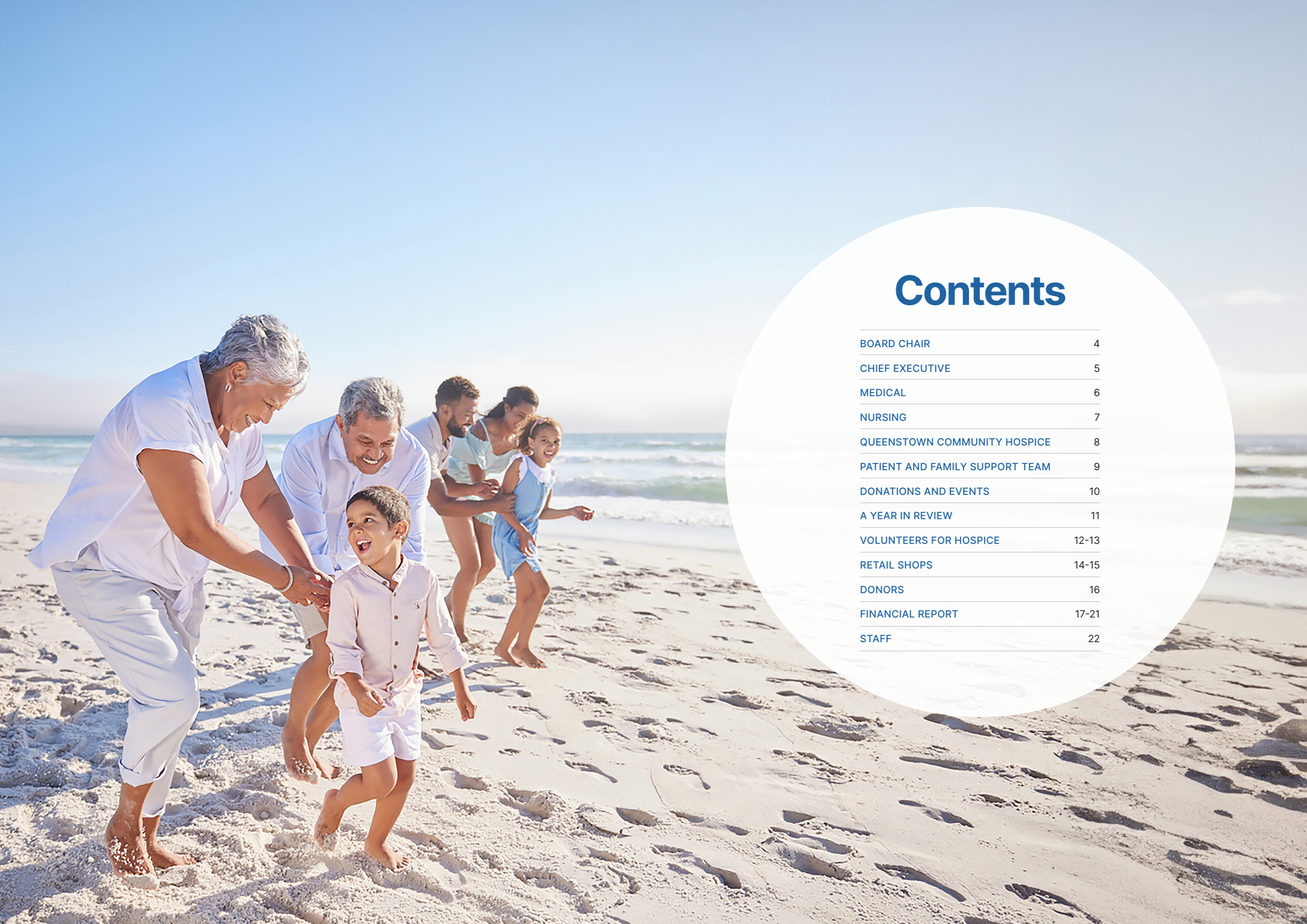




ANNUAL REPORT

2023





Contents

BOARD CHAIR	4
CHIEF EXECUTIVE	5
MEDICAL	6
NURSING	7
QUEENSTOWN COMMUNITY HOSPICE	8
PATIENT AND FAMILY SUPPORT TEAM	9
DONATIONS AND EVENTS	10
A YEAR IN REVIEW	11
VOLUNTEERS FOR HOSPICE	12-13
RETAIL SHOPS	14-15
DONORS	16
FINANCIAL REPORT	17-21
STAFF	22



Chairperson Report

THE 2022/23 YEAR SAW THE EMERGENCE FROM COVID RESTRICTIONS AND A RETURN TO NORMALITY.



Helen McCurdy
Hospice Southland
Board Chair

In October we welcomed our new medical director Dr Katie Weatherstone who completed her specialist palliative care qualification while working in Auckland but originally hails from Kent in the UK. Katie is a great asset for Hospice Southland.

Another of our successes was to have the Queenstown

Community Hospice established. This was opened on 5th May 2023. The Board made a strategic decision to establish a physical presence in Queenstown and we have grown the staffing to include a nurse manager, two nurses, a social worker, and a nurse practitioner.

The Board reflected on the Hospice Southland Trust Deed developed in 1991 which states under the OBJECTS *The Fund... shall at the Trustees absolute discretion be used for the furtherance of the following charitable purposes and objects within the community and Southland, Wakatipu and portions of West Otago Regions.*

We reviewed the population statistics and noted that our Trust covers a population base of 140,000 – of which almost 25% comes from Queenstown. This has been a driving force for us to build deeper roots in Queenstown through the establishment of the Queenstown

Community Hospice based in Yewlett Crescent in Frankton, Queenstown.

Costs have risen inexorably with increased activity and an inflationary economy. My thanks go to all those businesses and clubs who support us so well with events and donations, and to all those individuals who send in donations and help us afford to keep the Hospice running. My thanks also go to our shop managers, their staff, and their wonderful volunteers without whom we simply could not operate.

The Board and I want to thank our CEO Flora Gilkison for her hard work and effort to keep a complex business on track. The staff survey in June showed how satisfied the staff were and that they enjoyed and were proud to work at Hospice Southland. The Board also wants to thank all the staff and our volunteers who give so much of their time in a variety of ways to ensure our motto of 'living every moment' is possible.

Lastly my thanks to the Board, Peter Heenan our very able Treasurer, Tony Irvine our Board secretary, Dr Pat Hastilow, Dr Sally Dobbs and Graham Lewis for their clinical knowledge and input into decision making, John Faull for his building and facility knowledge, and Mhari Batty for her community input. Sadly, Mhari has not been able to join us often at our meetings but we have appreciated her contribution to the Board for many years. We thank her for her service, it has been greatly appreciated.



Board of Trustees (L-R) Mhari Batty, Graham Lewis, Tony Irvine – secretary, Pat Hastilow, John Faull, Helen McCurdy – chair, Sally Dobbs, Peter Heenan – treasurer.



Chief Executive Report

A BUSY YEAR AND ONE FILLED WITH GRATITUDE, AS OUR VERY SUPPORTIVE COMMUNITY ONCE AGAIN HELPED RAISE ALL THE FUNDS WE NEEDED TO PROVIDE SPECIALIST PALLIATIVE CARE TO THOSE WHO NEED IT FREE OF CHARGE.



Dr Flora Gilkison
Doctor of Management
Chief Executive Officer

Staffing changes meant saying hello to our new Medical Director, Katie Weatherstone, and goodbye to two great doctors, Dr Ian tat yen Koh who went to Melbourne to continue his palliative care studies, and Dr Merrill Drew who returned to the UK after giving us 18 months of sterling service. We have a great medical team.

We sadly said farewell to our marvellous Volunteer Coordinator, Jody Forbes after three years of sterling work and welcomed Toni Eades as a new face to Hospice.

Our nursing team has gotten busier with more and more patients, and these are ably led by Nursing Director John Cochrane and we just couldn't exist without our Clinical Administrator Lynn Dawson.

Our Patient and Family Support team offers emotional and spiritual support to our families and whānau under the guidance of Ros Harrington.

Hospice Southland was first established in November 1991, and it is fitting to remember the first chair who has recently died. Dr Hardy Hunt is remembered by all as a true gentleman.



Hospice Southland was first established in November 1991, and it is fitting to remember the first chair who has recently died. Dr Hardy Hunt is remembered by all as a true gentleman.

It's nice sometimes to look back and see how far we have come. With the recent passing of Dr Hardy Hunt a name many of you will remember for his work within Southland, especially for delivering almost 5,000 babies. He was also the first Chair of Hospice Southland. He, along with his team negotiated with the Area Health Board to be able to use an empty wing of the Nurses' Home. Through this, and some government funding the hospice service for the people of Southland was established.

Jack Faull at the 20-year reunion summed up by saying "Hospice Southland doesn't have the splendid reputation it has today without all these elements – staff, resources, volunteers, nor would it have the wonderful support from the public and a host of organisations without that combination". As it was then, it is today. Our generous people help us with our costs, and without you, we could not deliver our splendid service free of charge for all who need it in the Southland and Wakatipu areas.

We look forward to working with our community, our volunteers, and our staff over the next year. Thank you so much for your support, especially Helen McCurdy and her governance skills with the Board.



Credit: Southland Times



Medical Report

THE MEDICAL TEAM CONTINUES TO PROVIDE INPUT AND SUPPORT TO OUR PATIENTS IN THEIR OWN HOMES AND IN HOSPICE, AS WELL AS VISITING PATIENTS IN HOSPITAL.



Katie Weatherstone
Medical Director

The medical team has changed a lot over the last year. Two new doctors, Neil Cremasco and Katie Weatherstone, joined the team in October 2022. Neil worked as a GP in Otago for eight years before bringing his wealth of experience with him to Hospice Southland as a Medical Officer.

Katie Weatherstone joined the hospice soon after as the Medical Director and Palliative Specialist. Katie moved down to Southland with her partner David, a critical care nurse, and their young daughter Noa. Katie spends a lot of her time working clinically, providing advice to colleagues as well as seeing patients in person. Recently, she has started visiting patients in Western Southland fortnightly, which has been so enjoyable and interesting. Since starting, Katie has spent time getting to know local GPs and hospital specialists, and has been involved in regular teaching of healthcare colleagues. She has been appointed as a senior clinical lecturer at the University of Otago, and has set up a regular rotation of fourth and



Doctors Cremasco, Weatherstone, Drew and Koh.

final year medical students, as well as pharmacy and paramedicine students. Junior doctors are also back training at the hospice again, working for us in three month rotations. All this experience in Palliative Care is so important for our junior health professional colleagues, and will serve them and their future patients well.



The medical team has changed a lot over the last year. Two new doctors, Neil Cremasco and Katie Weatherstone, joined the team in October 2022.

In February 2023, we were very fortunate to have Rachel Trevathan join our team as a Medical Officer. Rachel is a GP with a background in health management, who spent two years training in Palliative Medicine in Christchurch. Her mix of skills and knowledge is a great asset for us at hospice.

More recently, Amanda Landers, a Palliative Care Specialist from Christchurch who has supported Hospice Southland over many years, became a regular employee of the hospice. She is providing medical support to Queenstown and Gore every fortnight, visiting patients at home and in hospital.

As well as having new doctors join our team, we have also had to say some sad goodbyes. Ian tat yen Koh, a junior doctor from Malaysia, left hospice in December 2022 to take up a medical training post in Melbourne. Merril Drew, a South African palliative care doctor with extensive experience in the UK, left hospice in May 2023 to travel and make her way back home to her family. Both Ian and Merril started together at hospice in May 2021 and we are very grateful for their hard work and commitment to Hospice Southland during a challenging time.



Nursing Report

SOUTHLAND'S GEOGRAPHY DRIVES OUR SERVICES. WE SUPPORT PATIENTS AND FAMILIES AS FAR NORTH AS GLENORCHY, AS FAR WEST AS MANAPOURI/TE ANAU, AS FAR SOUTH AS STEWART ISLAND, AND IN THE EAST FROM TAPANUI TO WAIKAWA. WITH A STEADILY INCREASING CASELOAD, WE HAVE EXPANDED OUR SERVICES IN THE COMMUNITY ACCORDINGLY.

It's been very busy year. With the pandemic receding we've gradually reduced restrictions so that other than mask wearing in patient areas, we are back to normal business. In December, we also said goodbye to Enrolled Nurse Corina Calvert after more than 30 years nursing with Hospice Southland.



Nurses Hena Chandra, Jo Bramer and Hannah Beardsley.

A highlight was attending Te Whatu Ora Southern's Nursing Excellence Awards at Southland Hospital in May, seeing three of our nurses receive awards for excellence. Jane Miedema – Quality & Practice Development Coordinator, Rohan Blackler – Community/ Triage Nurse and Lisa Henderson – Nurse Practitioner received their awards and acknowledgement from their nursing peers in front of nearly 100 nurses from all across Southland.

11 students from SIT's Bachelor of Nursing and Enrolled Nurse programmes spent time with us in 2022 and we would like to see that number increase. We've recruited Michael De Luna, a new graduate of SIT's Bachelor of Nursing course.

Our community nurse requirements have nearly doubled with our patient numbers steadily increasing, with an all-time high of 150.

A new weekend community nurse service between 9am-1pm, now provides telephone support and advice

and home visits if needed. This is working very well and enables better support of our District Nurse colleagues in the process.

We've increased our support for Aged Residential Care facilities, recognising the staffing pressures they are under. Our caseload in this area is growing.

Also new, we had Competency Assessment Programme students (overseas trained nurses wanting to register in New Zealand) visit the hospice to find out about palliative care delivery in New Zealand, and Southland in particular.

My thanks to all our nursing staff for their continuing commitment to palliative care in our region and loyalty to Hospice Southland, and to the people of our community who support us.



Hospice nurses and overseas graduates.



Queenstown Community Hospice

IT HAS DEFINITELY BEEN AN ENERGISING 12 MONTHS AS THE QUEENSTOWN COMMUNITY HOSPICE HAS BEEN GETTING UNDERWAY.



Marie Wales
General Manager

With the purchase of the newly acquired house in Frankton, and with resource consent granted, the team have been getting settled and excited about the potential opportunities this facility can provide. Without a doubt, it would arguably have one of the best views in New Zealand – so what a fabulous resource to share with those

facing a life-limiting illness, knowing there is now a place that is available for them and their wider whānau.

The community house is something very special, but even more so are the team working out and about across the community. Made up of Rebecca Davey (Community Nurse 0.8), Mary Millen (Community Nurse 0.4), and Julia Kluts (Social Worker 0.6), supported by Amanda Landers (Palliative Care Specialist), the team have been working hard to build relationships across the Whakatipu Basin. It is lovely to hear the positive comments about the trust and respect that is being built with patients, community groups and key stakeholders, that will further ensure we can deliver the best of care to anyone in need of our services. To have a team that can provide on the ground in home support, back up to the primary, secondary health and aged residential care providers is an invaluable and welcomed resource. To date, the team have provided educational sessions to staff at Lakes District Hospital, Aveda Aged Care, and were invited to the Whakatipu High School to talk to students about end of life. We've also held our first 'Cuppa and a Chat' in the house, for those experiencing grief after the loss which was very well received and now planning for a 'Caring for the Carers' course, and a Remembrance service to be held in the short-term future.

Now that we have a base, the priority is to continue increasing our networks and reach across the basin, and to really listen to the emerging needs of what individuals and whānau are indicating are their biggest challenges or concerns. From here we can start to look at how we can best respond and find solutions, working collaboratively

with others working in the palliative care space to reduce any inequities in access, and nurture best possible outcomes.

With Queenstown considered to be a high growth area, it is important that we begin to address the challenges ahead, so we can respond to the growing needs of this very diverse community. Having a physical presence will assist us to grow our profile, and our ability to develop more accessible services to those on a palliative care pathway.



What a fabulous resource to share with those facing a life limiting illness, knowing there is now a place that is available for them and their wider whānau.



7 Yewlett Crescent, Frankton

We are very appreciative of the support received from many different parties to include John 'Boggy' McDowell and the team in helping to set up the house, the wider Hospice Southland team and Board, and the community at large, who continue to humble us with their generosity.

If you are ever in Queenstown, we encourage you to drop in for visit, as we'd love to show off the fabulous new presence of hospice in the Whakatipu.



Patient and Family Support Team

THE PATIENT AND FAMILY SUPPORT TEAM HAVE CONTINUED TO PROVIDE SUPPORT TO PATIENTS AND THEIR FAMILIES IN THE COMMUNITY AND THE INPATIENT UNIT AT HOSPICE. THERE HAVE BEEN SEVERAL CHANGES OVER THIS PAST YEAR.



Ros Harrington
Manager

We welcomed Sharon Buick onto the team to work as the Spiritual care worker and she has certainly embraced the role. Sharon provides spiritual care to patients and families in the IPU, as well as the community. Our Remembrance services, which are held four times a year, have been attended by

many family members who have found them beneficial. Sharon also facilitates our monthly 'Cuppa and a Chat' group. This group is held on the first Monday of the month at Hospice at 10am, for any newly bereaved family members.

Chris Gilkison joined the team last year as a social worker, and works mainly with patients and families in the community. Jess Brown is another social worker who cares for some of our more rural patients, going the extra mile to enable them to access the support needed.

We are very fortunate to have experienced counsellors working with us at Hospice. Kate Owen is providing more support after returning from parental leave. Kate loves working with young people, having worked previously for Canteen. Sarah Jean, our other counsellor, has been instrumental in establishing a great course for carers. This is a course held once a week over four weeks where carers can be resourced and equipped to care for their loved ones at home. She has also begun a 'Cuppa and a chat' group in Gore.

Bereavement support for families continues to play an important role in the work the Patient and Family Support team do. We not only offer coffee groups and one-on-one counselling but also a six week bereavement group called 'Journey with Grief'. Family members are contacted around six months post-bereavement and invited to the group. Ros facilitates this with other team members.

These groups are held four times a year and all the groups have gone on to form their own coffee groups continuing to meet for ongoing support.

Kate Anderson, who has coordinated the Day program, Living Legacy and Complimentary Therapies service has moved over to work again as a Community Palliative care nurse in the community team. She has done a great job building the service, and we are in the process of rethinking this role and being creative in response to the needs identified. Kate has graciously continued to run the Day program, until the role is filled again.



Back row: Sarah Jean Burnett, Ros Harrington, Chris Gilkison, Jess Brown. Front row: Kate Owen, Kate Anderson, Sharon Buick.

Another change in our team has been the introduction of a new General Manager for the hospice team in Queenstown. This has meant that Julia Kluts, who is the Social worker/counsellor has now come under the team there. We are very thankful for all the contributions Julia made to our team, and the work she continues to do in Queenstown.

It continues to be a privilege to work as part of a multi-disciplinary team, where we all share our expertise to provide the best care possible for our patients and their families.



Donations and Events

A SNAPSHOT OF OUR YEAR AND EVENTS WITHIN OUR COMMUNITY.



Suzanne Prentice
Events Coordinator

Wow, what a year! It is difficult to put into words our gratitude, and heartfelt thanks to our wonderful volunteers, local businesses, schools, clubs and organisations for taking Hospice into their hearts and supporting us as their charity of choice when creating an event in our community. Your

commitment shows more than monetary value, it is a testament to your compassion and spirit that binds our community together. Thank you all so very much.

Every year, Hospice needs to raise over three million dollars to enable us to continue to offer first-class palliative care to those in our community that need it most, free of charge.

In the past year we have been a part of so many wonderful events. We would like to take this opportunity to sincerely thank each and every one of you who have donated, volunteered your time, or organised an event to benefit Hospice Southland.

Here is a look at some of those events we have enjoyed: Farmers Trading Annual Christmas Bauble campaign, collecting for Hospice at The Southern Artisan Christmas Fete, The Annual Street Appeal, and who could forget the beautiful sunflowers sold to benefit Hospice. Hospice Awareness Week and Volunteer Awareness Week, The Charity Indoor Dog Trials, the Gore Hospice Shop Fashion Parade, and the spectacular Variety Show, showcasing so much of our wonderful local talent.

We also like to lend our support to other charities that are helping people through their difficult journey or doing research to benefit all of New Zealand. This year we supported Pink Ribbon Day and will continue to support other events such as this throughout the year.

Together, we are making a profound difference in the lives of our loved ones, friends, neighbours, and all of those we care for.

Thank you all, you are certainly an integral part of our extended Hospice Southland family, we couldn't do it without you.



From top: Winton School Bookmarks Volunteer Week. Pink Ribbon Breakfast 2023. North Road Hospice Shop Bookmarks Volunteer Week.



HOSPICE SOUTHLAND A Year in Review

DEATHS

Hospice IPU	95
Hospital	24
At home	112
Rest homes	74
Other	3
Total	296

AVERAGE BED OCCUPANCY

60%



COMMUNITY PATIENT VISITS

2729



NURSING COMMUNITY TELEPHONE CONSULTATIONS

5213



RETAIL SHOPS

Invercargill
> Yarrow Street
> South City
> North Road

Winton
> Wemyss Road

Queenstown
> Gorge Road

Te Anau
> Town Centre

Gore
> Ordsall Road



PATIENT ADMISSIONS TO THE SERVICE

394

Cancer 278
Non-cancer 116



PATIENT AND FAMILY SUPPORT CONTACTS

Psychosocial 1824
Spiritual 305
Day programme attendance 340



TOTAL STAFF

81



DOCTORS AND NURSE PRACTITIONER VISITS

176



HOSPICE SHOP INCOME

\$2,618,265



VOLUNTEER HOURS

37,760



HOSPICE SOUTHLAND GROUP NET SURPLUS

\$76,841



VOLUNTEER CONTRIBUTION IS CALCULATED BY HOURS PAID AT THE LIVING WAGE

\$981,735



EVENTS INCOME

\$134,473



MINISTRY OF HEALTH FUNDING

\$2,847,334



DONATIONS

\$296,531



FRIENDS OF HOSPICE

\$209,896



BEQUESTS

\$113,466



GRANTS

\$68,992





Volunteers for Hospice

TOTAL NUMBER OF VOLUNTEERS
352

TOTAL NUMBER OF HOURS VOLUNTEERED
37,360

AREAS OF VOLUNTEERING

Kitchen

Evenings and weekends are often staffed by caring kitchen volunteers who help serve and prepare an evening or a weekend meal for our In Hospice Patients. Patients and their families are very appreciative of their service. As well as the Laker Drinks Trolley which is rolled around nightly. Thanks so much to Nathan Abernethy who is helping to keep this great tradition going.



Gardening

Vicki and Brent personify our fabulous team of gardeners. Hospice has extensive grounds, and these are kept in great shape by our team of expert gardeners. Our Heritage Rose team is also brilliant at looking after our beautiful heritage roses.



Spraying, weeding, pruning, planting, and trimming are hard work and the team comes regularly to keep things in good order. It's such a pleasure for our patients to look out their bedroom windows across our lawns to our beautiful gardens. These volunteers are very knowledgeable when they come and we do appreciate this physical work that goes into keeping our Hospice looking so good and peaceful.

Retail Volunteers

By far the largest group of all, with a great team of volunteers are those who volunteer in our shops. Right around the region from Queenstown to Te Anau, Winton, across to Gore, and then Invercargill. We have nine shops, all with a great team of volunteers. They collect, sort, mend and clean donations – as well as upcycle some of them, then help sell these, monitor thieves in the shops and help deliver purchases. Without them we could not raise the funds that are so absolutely necessary for Hospice to continue as a free service for all those who need our care.



From top: Queenstown Hospice Shop volunteers. Our expert team of gardeners. Gore Hospice Shop volunteers.



Clockwise from top left: Jody Forbes. Betty Gregory. Gore Hospice Shop Sustainable Fashion Show. Suzanne Prentice and the volunteers collecting for Annual Appeal 2023.

Raffles and Hospice Annual Appeal Day Volunteers

We give thanks to the many volunteers who help sell raffles and raise money for us when we have our Annual Appeal Day. They willingly give their time to sit outside supermarkets or large retail stores to raise funds for us. This can be cold work, especially in winter and we are so appreciative of the work they do.

Living Legacy Writers

This great team of superb writers really assist our patients leave a written memory for their families. The team sit with our patients and write their memories, and add in photos and family memories wherever possible.

If you are a good writer you too can become one of our Living Legacy team – just email volunteers@hospicesouthland.org.nz and say you would like to find out more about Living Legacies.



Hospice Southland Retail Shops

WITHOUT THESE WONDERFUL BUSINESSES, HOSPICE SOUTHLAND COULD NOT PROVIDE THE CARE AND SUPPORT WE GIVE TO OUR PATIENTS AND THEIR FAMILIES.

The large emporium on **Yarrow Street** took over the shop next door to enable larger items of furniture to be sold. Debbie Finnerty Retail Manager is ably supported by Tony Rain, Bridget Winter and Dee Heenan, plus over 70 volunteers.

North Road is a new venture replacing the Windsor Street shop, managed by Heather Moore and ably assisted by Jan Robinson. It is starting to develop its own niche of fine china, great clothes and other items of household needs.

South City, run by Mary Williams, is a great little shop and ably supports the South City community.

Gore is a great success, with the Ordsall Street shop near the big fish in Gore, selling just about anything. Sue Neiman manages this shop and is ably supported by a team of very enthusiastic volunteers, Betty and Jean, who are keen stalwarts of the shop.

In **Winton**, just around the corner from the main road is our fifth shop and again can you can buy just about anything. Maree Boulter manages this along with Ann and a team of volunteers. The window displays are something to be really proud of.



Jillian Woodside and Flora Gilkison with quilts made for Winton.



In **Te Anau** Cheryl Chittock, assisted by Wendy and Leonie and a whole host of marvellous volunteers run an amazing shop. We were very sad that our landlord, Owen Buckingham, passed away during the year. He was a great man and did a huge amount for Te Anau.

Lastly, our **Queenstown** shop on Gorge Road is run by John "Boggy" McDowell. The clothes are numerous, in great condition and very popular. There are also household items and upstairs has a sports section, especially with skiing items in winter.

These shops are well supported by everyone's donations, by those who shop there and the volunteers who keep us going.



Maree Boulter outside Winton Hospice Shop.



From top: Cheryl Chittock of Te Anau Hospice Shop. Alma of Gore Hospice Shop. Queenstown Hospice Shop.



From left: Debbie Finnerty and Dee Heenan outside Yarrow Street Hospice Shop. Heather Moore outside North Road Hospice Shop. Mary Williams of South City Hospice Shop.



Thanks to our Major Donors

HOSPICE SOUTHLAND WARMLY THANKS THE FOLLOWING LIST OF MAJOR SUPPORTERS WHO HAVE GIVEN \$1,000 OR MORE IN BEQUESTS, DONATIONS, GRANTS AND SPONSORSHIPS DURING THE FINANCIAL YEAR 1 JULY 2022 TO 30 JUNE 2023:

Neville Stronach	\$1,000.00	GJ & JM Boyle Family Trust	\$2,500.00
Mrs J Gonscak	\$2,000.00	JBW McKenzie Trust	\$5,000.00
Tuatapere Golf Club	\$9,200.00	Lynette Tee	\$1,500.00
Lions Club of Tuatapere	\$10,000.00	Anonymous	\$1,000.00
Trout Fishing Competition	\$2,250.00	Southerly46 Trust	\$5,000.00
C S Roofing	\$1,200.00	ILT Foundation	\$35,000.00
Lions Club of Toi Toi	\$1,270.90	Invercargill Licensing Trust	\$30,000.00
P R Law	\$5,000.00	Sheddan Pritchard Law Ltd	\$50,000.00
Elinor Collins	\$1,000.00	Anonymous	\$10,000.00
M W Stearne	\$1,000.00	John & Joan Crawford	\$25,000.00
Anonymous	\$1,000.00	FA & RA Moore Family Trust	\$5,000.00
C S Roofing Ltd	\$1,000.00	Gary Lonsdale	\$1,000.00
Southern Indoor Charity Dog Trial	\$20,000.00	McLeay Jewellers & Engravers	\$3,000.00
Sylvia Stronach	\$1,000.00	Millbrook Resort	\$2,700.00
Rodney Botting	\$1,000.00	Anonymous	\$2,000.00
P R Law	\$3,115.04	Singleton Signs	\$1,500.00
Kaan's Catering Supplies Ltd	\$2,658.11	Neville Stronach	\$1,000.00
Southern Floor Care	\$2,500.00	Carla Fry	\$5,000.00
Local Authority Property Association	\$1,000.00	Clark Barron	\$1,000.00
Hugh Anderson Charitable Trust	\$6,000.00	Anonymous	\$1,000.00
Hospice NZ - Harcourts Foundation	\$3,343.00	Anonymous	\$15,000.00
Rural Women of NZ - Southland Provincial Branch	\$2,000.00	Finesse Hair & Beauty	\$6,191.00
Ian Hamilton	\$1,000.00	A & M Contracting Ltd	\$1,200.00
J & S Ward	\$5,000.00	R Jack Contracting Ltd	\$1,200.00
Inner Wheel Club of Invercargill South	\$2,000.00	Rata Park Rest Home	\$1,000.00
Allan Baxter	\$1,000.00	Sandford Farming	\$1,200.00
Anonymous	\$5,000.00	Invercargill Hose & Hydraulics Ltd	\$1,000.00
Placemakers Foundation	\$72,526.80	Invercargill Workingmen's Club Inc	\$5,000.00
Lindy Dobson	\$20,000.00	Allan Baxter	\$1,000.00
C S Roofing	\$1,100.00	NZ Dominican Sisters Trust Board	\$1,000.00
Lions Club of Gore River Valley	\$23,500.00	Baillie & Lewis Pharmacy	\$3,000
Clifton Tennis Club Incorporated	\$20,000.00	Windsor Architectural Hardware	\$1,000
Hazlett Limited	\$27,820.00	Collaborate Fashion NZ	\$1,955
Bishop's Office - Catholic Pastoral Centre	\$1,000.00	Anonymous	\$5,000
Shona Tippet	\$1,691.00	Rural Women of NZ - Southland	\$10,000
Kaan's Catering Supplies	\$2,817.73	Pat Wills-Hampton	\$1,500
Gore & Town Country Club (Inc)	\$1,000.00	Lions Club of Gore Pakeke	\$5,000
Trojan Holdings Ltd	\$3,000.00	Lindy Dobson	\$5,000
Farmers	\$12,193.01	J&D Turnbull	\$2,000
Southern Rhodenza	\$3,000.00	Rotary Club of Gore	\$1,000
Duncan & Joan McKenzie	\$5,000.00	Mee & Henry Law Ltd	\$37,673
Anonymous	\$1,000.00	Kaan's Catering Supplies Ltd	\$3,155



Peter Heenan
Treasurer
Hospice Southland,
Board of Trustees

OPERATIONS

Total expenditure for the 12-month period was \$7,595,496, up \$1,030,700 on the previous year. As would be expected our largest expense in running the Hospice are staff wages and salaries. There was an 18.44% increase in wage costs this year due to some restructuring and expansion

to ensure we continued to provide palliative care service in our inpatient unit and in the community for the people of Southland and the Wakatipu Basin

Ministry income which represents 36.41% of our expenditure was \$2,765,487. This leaves a shortfall in funds of \$4,830,009 for the year, this is made up from community funding via donations, shop turnover, events, grants, bequests, and volunteer hours.

The net contribution from the Hospice shops to funding was \$1,982,969, an increase of \$371,580 from the previous year.

The shops, after Ministry funding, are the largest contributor to overall Hospice funds and we are extremely grateful to the team in our stores in Invercargill, Gore, Winton, Queenstown and Te Anau.

The contribution in volunteer hours in the last 12 months is estimated at \$981,735 which represents 41,512 hours. The value derived from the generous input from more than 350 unpaid volunteers ensures the Hospice has the income to do the valuable work it does.

INVESTMENTS

Income from our investments resulted in cash surplus of \$435,033 for the year compared with last year of \$336,170. The increase was due to the increase in investment income interest rates and dividends.

Our Hospice Southland Foundation had a positive movement in portfolio market value of \$19,483 versus the write-down last year of \$1,240,298. We are pleased our portfolio of investments is sufficiently diversified and resilient to weather market fluctuations.

IN CONCLUSION

The consolidated surplus for the year was \$76,841 compared with a loss last year of \$164,651. This is a pleasing result considering the impact of the economy with COVID-19 and inflationary pressures. As a Charitable Trust set up for the benefit of our community in need of palliative and associated services, your continued generosity directly funds the care of individuals in need.

Thank you again to our benefactors, donors, and volunteers. With your continued support we can ensure that palliative care and associated services are available to all people in Southland and Southern Lakes.

Hospice Southland Charitable Trust (Group)

STATEMENT OF COMPREHENSIVE REVENUE AND EXPENSE

	2023	2022
Revenue From Non-Exchange Transactions:		
Donations, Fundraising and Other Similar	823,258	1,525,277
Wage Subsidy and Relief	7,559	55,898
Volunteer Contribution	981,735	965,351
	1,812,552	2,546,526
Revenue From Exchange Transactions:		
Health NZ – Te Whatu Ora	2,765,487	2,551,290
Hospice Shop Sales of Goods	2,618,265	2,186,637
Sundry Income	21,517	19,820
	5,405,269	4,757,747
Total Revenue	7,217,821	7,304,273
Expenses:		
Contribution to Defined Contributions Funds	121,641	92,750
Employee Related Costs	4,913,421	4,158,524
Service Costs	397,570	285,730
Hospice Shop Costs	635,296	575,248
Fundraising Costs	50,526	37,963
Other Costs	222,627	228,330
Depreciation and Amortisation	272,680	220,900
Services In-Kind	981,735	965,351
	7,595,496	6,564,796
Net Surplus Before Other Income	(377,675)	739,477
Other Income		
Investment Income	435,033	336,170
Gain (Loss) on Financial Instruments at Fair Value	19,483	(1,240,298)
Total Other Income	454,516	(904,128)
Total Net Surplus	76,841	(164,651)
Contribution from Group Entities		
Hospice Southland Charitable Trust	(367,007)	236,732
Hospice Southland Foundation	443,848	(401,383)
Total Net Surplus	76,841	(164,651)

STATEMENT OF CHANGES IN EQUITY

	2023	2022
Opening Equity	16,671,963	16,836,614
Total Comprehensive Revenue and Expense	76,841	(164,651)
Closing Equity	16,748,804	16,687,963

STATEMENT OF FINANCIAL POSITION AS AT 30 JUNE 2023

	2023	2022
Cash and Cash Equivalents	1,383,934	957,094
Receivables from Exchange Transactions	268,124	260,583
Short Term Investments	—	212,421
Total Current Assets	1,652,058	1,430,098
Property, Plant and Equipment	4,197,017	4,138,368
Non-Current Investments	11,582,709	11,720,310
Total Non-Current Assets	15,779,726	15,858,678
Total Assets	17,431,784	17,288,776
Total Current Liabilities	682,980	616,813
Net Assets	16,748,804	16,671,963

CASH FLOW STATEMENT FOR THE YEAR ENDED 30 JUNE 2023

	2023	2022
Net Cash flows from Operating Activities	388,664	1,336,372
Net Cash flows from Investing Activities	36,515	(3,265,540)
Net Decrease in Cash and Cash Equivalents	425,179	(1,929,168)
Effect of Exchange Differences on Foreign Cash	1,661	(576)
Cash and Cash Equivalents at 1 July	957,094	2,886,838
Cash and Cash Equivalents at 30 June	1,383,934	957,094

Notes to the Summary Financial Statements


The disclosures included in the summary financial report have been extracted from the full Group audited financial statements for which an unmodified opinion was issued on 11 September 2023. These Group financial statements were authorised by the Board of Trustees on 11 September 2023.

The summary of the audited financial statements was prepared in accordance with FRS-43: Summary Financial Statements.

The summary financial report cannot be expected to provide as complete an understanding as provided by the full financial statements. A copy of the full Group audited statements is available from:

 **Hospice Southland Charitable Trust,
Gate 1, Elles Rd
Southland Hospital Grounds
PO Box 7020
Invercargill**

or

 **Telephone 03 211 3081**

The Hospice Southland Charitable Trust (Group) is made up of Hospice Southland Charitable Trust (Parent) and Hospice Southland Foundation. The Group financial statements have been prepared in accordance with Tier 2 Not for Profit Public Benefit Entity (PBE) Financial Reporting Standards as issued by the New Zealand External Reporting Board (XRB). The Group financial statements comply with New Zealand equivalents to International Public Sector Accounting Standards Reduced Disclosure Regime (NZIPSAS with RDR) and other applicable Financial Reporting Standards as appropriate in Public Benefit Entities.

The entity is deemed a public benefit entity for financial reporting purposes, as its primary objective is to provide services to the community for social benefit and has been established with a view to supporting that primary objective rather than a financial return.

The summary financial statements are presented in New Zealand dollars, which is the Group's functional currency.



Independent Auditor's Report to the Trustees of Hospice Southland Charitable Trust on the Summary Financial Statements

The accompanying summary financial statements, which comprise the summary statement of financial position as at 30 June 2023, the summary statement of comprehensive revenue and expense, summary statement of changes in net assets/equity and summary cash flow statement for the year then ended, and related notes, are derived from the audited consolidated financial statements of Hospice Southland Charitable Trust for the year ended 30 June 2023. We expressed an unmodified audit opinion on those financial statements in our report dated 11 September 2023. Those financial statements, and the summary financial statements, do not reflect the effects of events that occurred subsequent to the date of our report on those financial statements.

The summary financial statements do not contain all the disclosures required for full financial statements under generally accepted accounting practice in New Zealand. Reading the summary financial statements, therefore, is not a substitute for reading the audited consolidated financial statements of Hospice Southland Charitable Trust.

Trustees' Responsibility for the Summary Financial Statements

The trustees are responsible for the preparation of a summary of the audited consolidated financial statements in accordance with FRS-43: Summary Financial Statements.

Auditor's Responsibility

Our responsibility is to express an opinion on the summary financial statements based on our procedures, which were conducted in accordance with International Standard on Auditing (New Zealand) (ISA (NZ)) 810, "Engagements to Report on Summary Financial Statements." Other than in our capacity as auditor we have no relationship with, or interests in, Hospice Southland Charitable Trust.

Opinion

In our opinion, the summary financial statements derived from the audited financial statements of Hospice Southland Charitable Trust for the year ended 30 June 2023 are consistent, in all material respects, with (or a fair summary of) those financial statements, in accordance with FRS-43.

BDO Invercargill

BDO Invercargill
136 Spey Street
Invercargill 9810
New Zealand
12 September 2023



Staff and their roles

THE FOLLOWING STAFF WERE EMPLOYED AT HOSPICE SOUTHLAND BETWEEN 1 JULY 2022 AND 30 JUNE 2023.

CHIEF EXECUTIVE

Flora Gilkison

BOARD MEMBERS

Helen McCurdy, *Chair*
 Peter Heenan, *Treasurer*
 Tony Irvine, *Secretary*
 Graham Lewis
 Sally Dobbs
 Pat Hastilow
 John Faull
 Mhari Baty

MEDICAL TEAM

Katie Weatherstone
 Amanda Landers
 Thomas Joseph
 Rachel Trevathan
 Neil Cremasco
 Merrill Drew

NURSING TEAM

John Cochrane
 Mary Massey
 Annette Eunson
 Beth Hishon
 Josephine Butler
 Brenda Scully
 Susan Taylor
 Margaret Hewett
 Patricia Clarke
 Janette Nally
 Lisa Henderson
 Helen Glynn
 Haidee Oliver-Thompson
 Rohan Blackler
 Vivienne Wesney

Raewyn Knight
 Rowan Trotter
 Kate Anderson
 Jessica Brammer
 Amelia Jones
 Linda Wikeepa
 Rebecca Todd
 Alice Jamieson
 Lynn Dawson
 Jane Miedema
 Jane Brown
 Hema Chandra
 Carol Rodgers
 Retha Legge
 Jane Miedema
 Leona Roberts
 Michael De Luna
 Jennifer Keen
 Jo Bremer
 Margaret Morunga
 Leetisha van't Wout
 Hannah Beardsley

SUPPORT SERVICES TEAM

Flora Gilkison
 Kathryn Bell
 Suzanne Prentice
 Cindy Hyde
 Sue Cocker
 Nikki Steyn
 Grant Hayes
 Jody Forbes
 Gavin Bell

HOUSEKEEPING TEAM

Deborah Smith
 Denise Knight

PATIENT AND FAMILY SUPPORT TEAM

Ros Harrington
 Sarah-Jean Burnett
 Kate Owens
 Sarah Buick
 Jessica Brown
 Christine Gilkison

RETAIL

Tony Rain
 Sue Neiman
 Deborah Finnerty
 John McDowell
 Ann Drummond
 Wendy Jenks
 Maree Boulter
 Cheryl Chittock
 Jean Pawsey
 Elizabeth Gregory
 Leonie Seyb
 Bridget Winter
 Heather Moore
 Janet Robinson
 Dee Heenan
 Alfred Warnaar
 Diane Stewart

QUEENSTOWN COMMUNITY HOSPICE

Marie Wales
 Rebecca Davey
 Mary Millen
 Julia Kluts



📍 Hospice Southland
75 Kew Rd
Invercargill 9812
PO Box 7020

☎ 03 211 3081

✉ office@hospicesouthland.org.nz

www.hospicesouthland.org.nz